



GREENLINE

— YACHTS —

Greenline 40

Leave your worries at work, it is family time now



Traditional side anchor
or optional bow anchor
with bowsprit

Greenline 40 redefines boating. The level of well-being at anchor or at sea has been brought to a new dimension. The comforts of moving around with ease, excellent visibility, ambient light and optimal ventilation in all areas are well above expectations.

The Greenline 40 will take care of you during the extended cruising trips you have always wanted to take.



Standard solar
panels 1.980 W



Newly-designed dashboard with digital gauges



360° panoramic view in the salon

Open galley





Adaptive owner's cabin



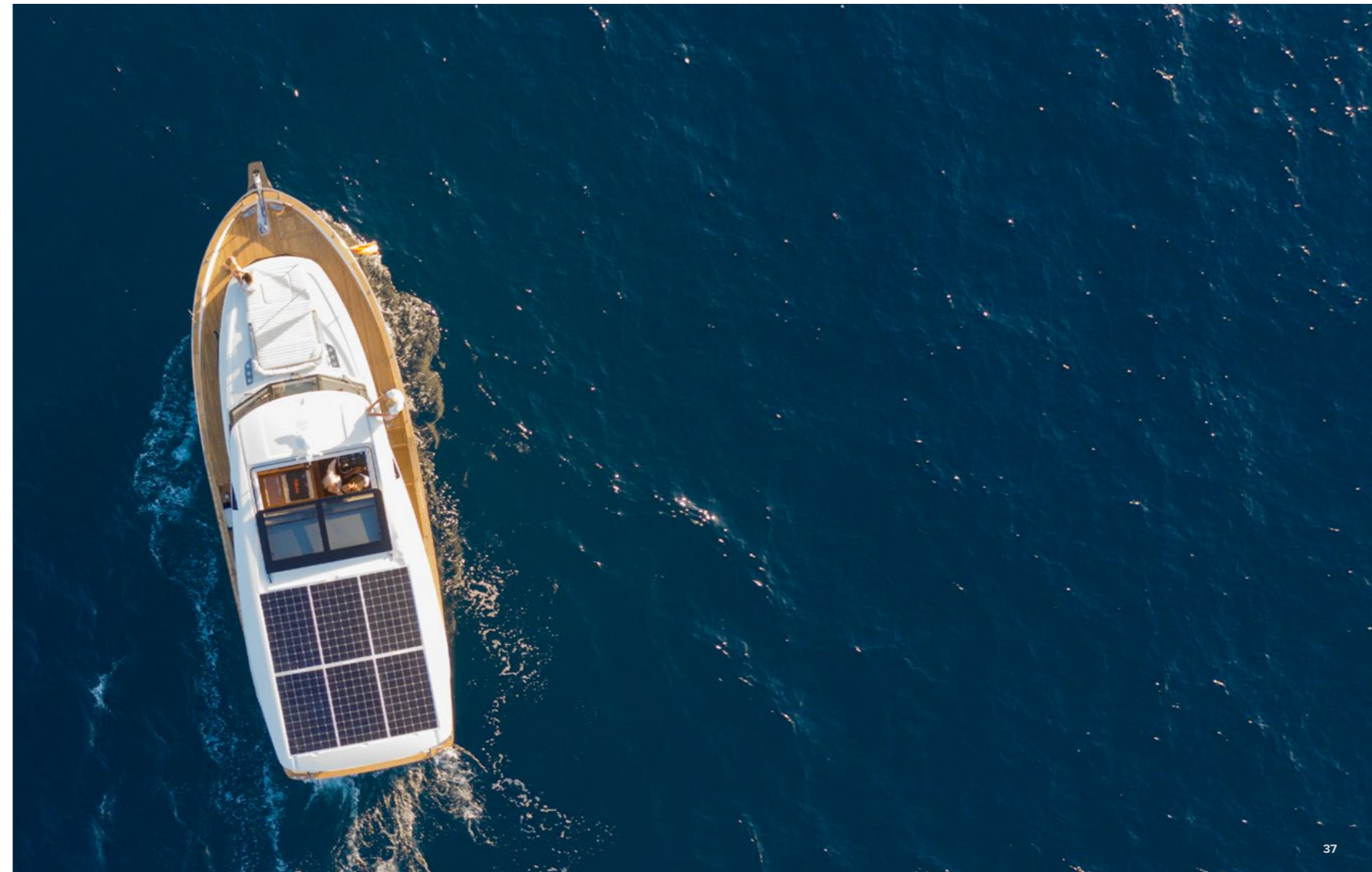
The Greenline concept puts comfort and convenience at the top of our priority list making it easy to move around as there is not a single step to overcome from the bathing platform to the helmsman's position.



Superb guest cabin



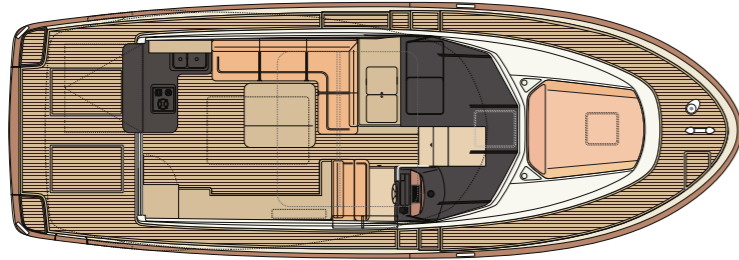
Bathroom with a separate shower accessible from owner's cabin and salon



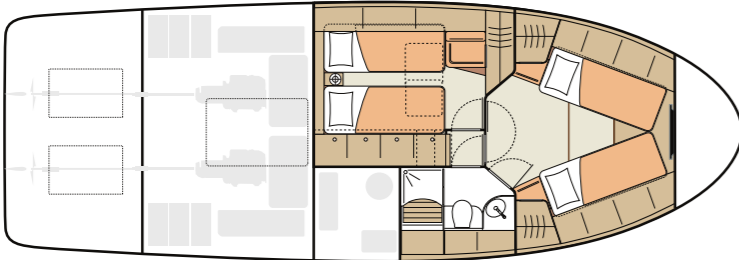
Greenline 40



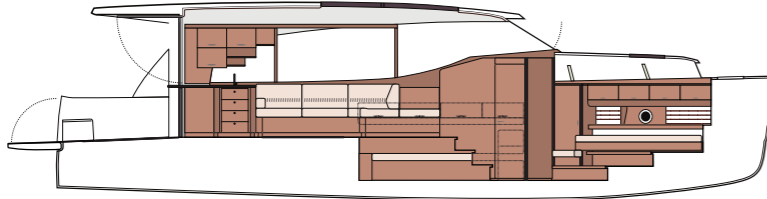
MAIN DECK



LOWER DECK



SIDE VIEW



Features

- Solar panels as standard
- Yanmar Engine
- Silent eco-navigation
- Opening bathing platform
- City water connection
- 230/120V AC power at all times
- Adaptive owner's cabin
- Twin-access, high-volume bathroom
- Open galley
- Sheltered cockpit and sidedecks
- Natural light and 360° panoramic view in the salon
- Cockpit side exit
- Cockpit storage
- Single level living space

Technical specifications

Standard dimensions

Length overall	11.99 m	39'5"
Beam overall	4.25 m	13'11"
Bridge clearance (minimum)	2.85 m	9'4"
Draft empty	0.85 m	2'9"
Displacement empty	8000 kg appr.	17,636 lbs
Cabins	2 + salon	
Max. berths	4 + 2	
Toilets/washrooms	1	
Diesel tank	700 l	184.92 gal
Water tank	400 l	105.67 gal
CE category	B	
Design	J&J Design	

Solar / Power management

	STANDARD PACKAGE	OPTION
Standard solar panels	1.6 kW	
Standard LiFePO4 batteries	4.1 kW/h	8.2 kW/h
Standard inverter	3 kW	5 kW



See how it works on greenlinehybrid.com

* Displacements are calculated with 50% fuel and water plus liferaft but with no optional equipment or other gear fitted.
 ** Depending on selected equipment and propulsion.
 *** Maximum speeds will vary depending on cleanliness of hull, condition of stern gear, craft load, water and air temperatures, sea conditions and other factors. Speed estimates are therefore given in good faith but without any warranty or liability on the part of SVP Yachts. For more information and detailed standard specifications please contact your local dealer.

Electric Drive



Electric motor	2 x 50 kW
Battery capacity	up to 80 kW/h
Max speed	10 kts
Cruising speed	7 kts
Range	30 Nm
Range extender / generator	4 kW
Range with range extender at 5kts	up to 75 Nm

Hybrid Drive



Electric motor	2 x 18 kW
Battery capacity	up to 53.2 kW/h
Max speed electric mode	7.5 kts
Range in electric mode (5kts)	up to 20 Nm
Diesel engine	2 x 250 hp
Max speed diesel mode	24 kts
Generator in diesel mode	2 x 14 kW

Diesel Drive



2 x 250 hp Shaft drive	22 kts
Max range at 7 kts	700 Nm



Greenline 39



Greenline 40



Greenline 45 Coupe



Greenline 45 Fly



Greenline 48 Coupe



Greenline 48 Fly



Greenline 58 Coupe



Greenline 58 Fly