



GREENLINE

— YACHTS —

Greenline 39

Discover a new sense of freedom



Aft camera available




Stepping on board of the Greenline 39 you cannot help but be amazed by the feeling of space. The key elements of Greenline design are all there - the 360° panoramic view in the salon, the aft galley, electric fold-down transom and the spacious layout which all come together to create one of the most sociable and relaxing boats on the market today.

Step on board the Greenline 39 and discover a new sense of freedom.




360° panoramic view from the salon




Opening bathing platform




Open galley





Adaptive owner's cabin



Bathroom with a separate shower accessible from owner's cabin and salon



Superb guest cabin



Comfortable sunbathing area

Greenline 39 is all about sophistication in design, technology, production and environment. Thanks to dedicated engineers and designers, as well as experienced craftsmen skilled at latest technologies in boat building Greenline 39 has become one of the most popular boats in a short time.

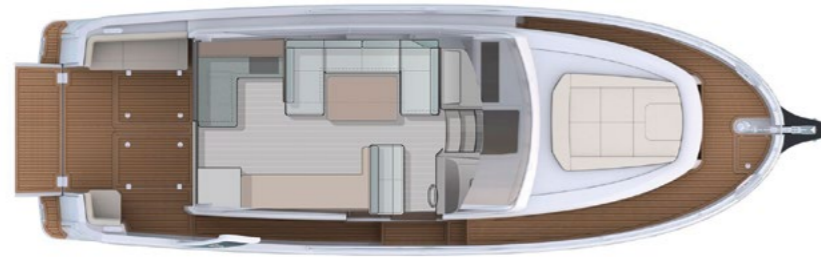
Greenline 39 design profited from feedback of hundreds of users from all over the world. We improved every single point, from boarding the boat to hydrodynamics, from seaworthiness with low consumption to more speed and stability.



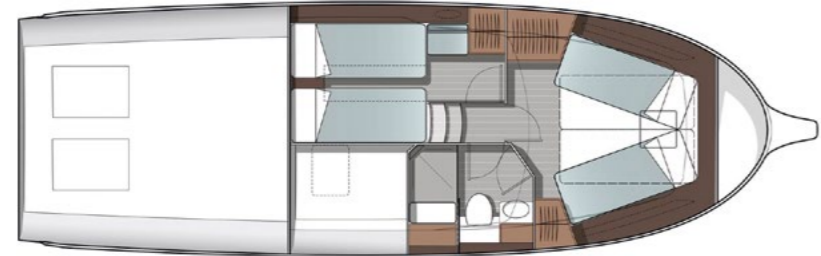
Greenline 39



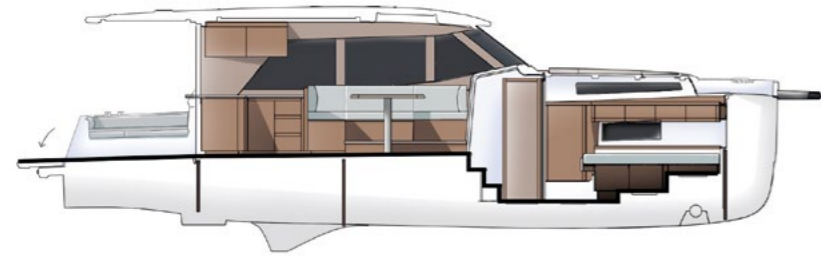
MAIN DECK



LOWER DECK



SIDE VIEW



Features

- Solar panels as standard
- Yanmar Engine
- Silent eco-navigation
- Opening bathing platform
- City water connection
- 230/120V AC power at all times
- Adaptive owner's cabin
- Twin-access, high-volume bathroom
- Open galley
- Sheltered cockpit and side decks
- Natural light and 360° panoramic view in the salon
- Cockpit side exit
- Cockpit storage
- Single level living space

Technical specifications

Standard dimensions

Length overall	11.99 m	39'4"
Beam overall	3.75 m	12'4"
Bridge clearance (minimum)	3.16 m	10'4"
Draft empty	0.90 m	2'11"
Displacement empty	7000 kg appr.	15,432 lbs
Cabins	2 + salon	
Max. berths	4 + 2 opt.	
Toilets/washrooms	1	
Diesel tank	700 l	184.92 gal
Water tank	400 l	105.67 gal
CE category	B	
Design	J&J Design	

Solar / Power management

	STANDARD PACKAGE	OPTION
Standard solar panels	1.1 kW	
Standard LiFePO4 batteries	4.1 kW/h	8.2 kW/h
Standard inverter	3 kW	5 kW



See how it works on greenlinehybrid.com

* Displacements are calculated with 50% fuel and water plus liferaft but with no optional equipment or other gear fitted.
 ** Depending on selected equipment and propulsion.
 *** Maximum speeds will vary depending on cleanliness of hull, condition of stern gear, craft load, water and air temperatures, sea conditions and other factors. Speed estimates are therefore given in good faith but without any warranty or liability on the part of SVP Yachts. For more information and detailed standard specifications please contact your local dealer.

Electric Drive



Electric motor	50 kW
Battery capacity	up to 80kW/h
Max speed	11 kts
Cruising speed	7 kts
Range	30 Nm
Range extender / generator	4 kW
Range with range extender at 5kts	up to 75 Nm

Hybrid Drive



Electric motor	18 kW
Battery capacity	up to 26.6 kW/h
Max speed electric mode	7 kts
Range in electric mode (5kts)	up to 20 Nm
Diesel engine	250 hp
Max speed diesel mode	18 kts
Generator in diesel mode	14 kW

Diesel Drive



250 hp Shaft drive	18 kts
370 hp Shaft drive	25 kts
Max range at 7 kts	700 Nm



Greenline 39



Greenline 40



Greenline 45 Coupe



Greenline 45 Fly



Greenline 48 Coupe



Greenline 48 Fly



Greenline 58 Coupe



Greenline 58 Fly